



## News and Updates

\*First Equine is coming up on its **one year anniversary of being open!** We are grateful to the wonderful clients that have allowed us to care for their horses over the past year. The practice has grown every month and we look forward to what the future holds. Thank you for spreading the word and being a part of the First Equine practice family!

\*We strive to provide the latest medicine for our patients of First Equine. Doing this requires attending regular continuing education events.

- Dr. Brittany First recently returned from a **CE event at Auburn University** covering a variety of topics including: cervical facet injections, navicular syndrome, EPM, respiratory disease, and dorsal hoof wall resections.
- Dr. Patrick First will be attending the annual **AAEP Convention in San Antonio** at the end of November. This is the largest gathering of equine veterinarians in the country.

\*We will be **adding services to the Peak Performance Wellness Plan for 2018!** If your horse was not on our Wellness plan this previous year, or if you have been considering getting on it, let us know. You can find a breakdown of what the wellness plan includes on our website under **Client Education**. Click on the link below to navigate our website.

\*New diagnostic imaging capabilities are coming soon!!!

\*Christmas is also around the corner! We will be doing a **countdown to Christmas giveaway** every week of December leading up to Christmas. Stay tuned on [Facebook](#) for some great giveaways!

Dr's Patrick and Brittany First

Visit our Website

---

## Write a Google Review

[Review First Equine Here!](#)

Don't forget to follow us on Facebook and [Instagram!](#)



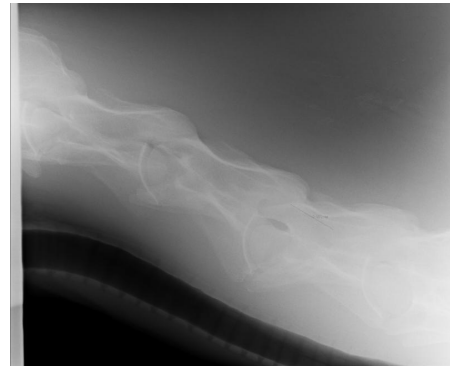
---

## Service Spotlight

### Digital Radiography

The ability to take high quality radiographs in the field is vital in

making an accurate diagnosis. We are fortunate to have a state of the art wireless, digital x-ray system! This system is portable and takes quality images of distal limbs, hocks, stifles, skulls, and cervical and thoracic vertebrae.



## Success Story

### Phantom's Battle with Laminitis

Phantom is a 9 year old Paso Fino gelding from Silverhill, Alabama. He presented to Dr. Patrick First on August 1<sup>st</sup> 2017 with a history of acute soreness in his front feet. On exam Phantom was overweight, and had a body condition score of 6.5/9 (5 is ideal). Both front feet had significant digital pulses and were warm to the touch. Phantom was an obel grade 3, meaning he was able to walk but reluctant to pick up opposite limb. Radiographs were

performed and revealed a severe case of laminitis with 12 degrees rotation and less than 3mm sole depth in each foot.

### What is laminitis and how is it caused by Equine Metabolic Syndrome?

Laminitis is defined as inflammation of the laminae which are the fingerlike structures holding the coffin bone to the hoof wall. It can be caused by a variety of pathways including: stress, endotoxemia, grain overload, equine metabolic syndrome, PPID, excessive weight bearing, and mechanical trauma. Equine metabolic syndrome is characterized by insulin resistance and peripheral fat deposits. Horses with this disease are frequently overweight and at higher risk to develop laminitis when ingesting sugar rich diets like sweet feed or lush pasture grass.

### Phantom's Treatment

Phantom was placed in Cloud boots and started on Phenybutazone (to suppress inflammation and pain), Acepromazine (to improve perfusion to small blood vessels in the foot), Isoxsuprine (to make red blood cells more flexible allowing better perfusion to the foot), and Gastrogard (to protect the stomach from gastric ulceration due to NSAIDS.) Blood was drawn to test for Equine Metabolic Syndrome and Pituitary Pars Intermedia Dysfunction, two common causes of laminitis. Phantom's insulin levels were extremely elevated at 103 (Normal= 10-40 uU/ml) leading to a diagnosis of insulin resistance and equine metabolic syndrome. Feeding changes were implemented including reducing starch intake and eliminating access to lush grass. Phantom gradually improved day by day. A recheck evaluation was done on Sept 27<sup>th</sup>. We are happy to say that Phantom is now sound in all gates, has grown 8mm of sole depth and is transitioning to regular shoes with caudal foot support.



First Equine Veterinary Services | 662-684-9667 | [firstequinevet@gmail.com](mailto:firstequinevet@gmail.com) | [www.firstequinevet.com](http://www.firstequinevet.com)

STAY CONNECTED

